

Project Updates

September 2010

Queensland Gas Company – Coal Seam Gas

Osmoflo is providing an advanced reverse osmosis plant to desalinate water displaced as a result of coal seam gas extraction at OCG's Roma site, one of the first CSG projects in Queensland.

Featuring pre-treatment using disc micro filtration prior to the desalination membranes, the Osmoflo facility will treat the displaced water to a quality standard that enables its beneficial release to the environment.

The plant design allows for easy expansion to cater for future demand.



Fabrication of one of the desalination modules

Delta Energy – Power Generation

Following the successful commissioning in 2009 of an Osmoflo desalination plant at Delta Energy's Mt Piper Power Station in NSW, design work is now well advanced on a second plant for the company's nearby power generation facility at Wallerawang.

The purpose of both plants is to enable the continuous recycling of cooling tower blowdown water by treating the used water to a high purity standard. Benefits include substantial reduction in the quality of water drawn from the environment.

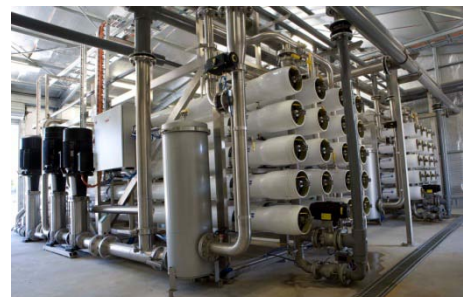


Technology that will be used at Wallerawang

Penrice Soda Products – Manufacturing

Until relatively recently Penrice, Australia's only manufacturer of soda ash, was the second highest user of mains water in South Australia. In 2006 Osmoflo helped Penrice reduce that dependency by providing, through a Build Own Operate contract, a desalination plant which enables the use of alternative water sources.

Osmoflo is now commissioning a second plant which will treat site wastewater enabling its reuse. As a result Penrice will have even less reliance on mains water.



Penrice's current reverse osmosis desaliantion plant